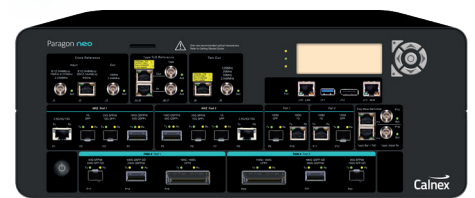


# Solve the timing challenges of 5G



Paragon-neo



Paragon-neo A (PAM4)

# Supporting your changing environment

As the world prepares for 5G, the levels of synchronization accuracy and speed of data transfer required are increasing exponentially. In response, the ITU-T is enhancing the G.827x series of standards to cover next-generation accuracy requirements – to ensure that Ethernet systems are robust against varying transmission delays and other effects that can significantly disrupt the precise transfer of timing. These ITU-T standards also form the foundation of timing requirements for new Open Radio Access Networks, and are inherently required for O-RAN compliance.

The Paragon-neo is the latest platform from Calnex, providing PTP and SyncE testing of speeds up to 400GbE (Paragon-neo A (PAM4)) or 100GbE Paragon-neo. It's designed to meet the stringent test requirements of NEMs who are developing, verifying and manufacturing devices against enhanced timing standards such as for ITU-T G.8273.2

Boundary Clocks, O-RAN compliant O-DU and O-RU equipment, and for those designing and deploying 5G networks and systems.

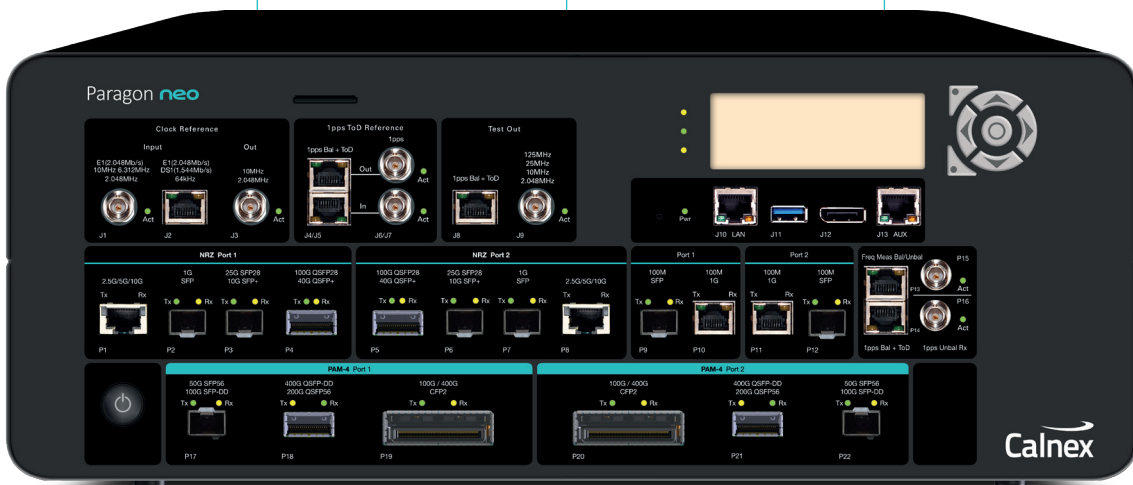
What's more, because high network efficiency and reduced data transmission costs are only possible with highly accurate timing, Paragon-neo offers hardware performance and software test methodologies allowing *sub-nanosecond accuracy* for the entire test system.

To meet the timing challenges of 5G deployments, Calnex is committed to providing the most advanced, precise and reliable test solutions to make sure your devices and systems deliver the high quality network services of the future. In a changing world, it's good to know that some things never change.

Analyse PTP conformance to standards-based or user-defined profiles, with automatic indication of pass/fail (and reason for non-compliance) and report generation.

Generate SyncE wander and jitter for ITU-T G.8262.1/G.8262 testing, simultaneously measure SyncE wander and PTP Time Error, and control ESMC message generation for testing to ITU-T G.8264.

Emulate PTP clocks to maximise accuracy and repeatability of PTP test, including specific test modes for various DUTs and automatic test selection for ITU-T and O-RAN standards conformance.



## PTP Field Verifier (PFV)

- Analyze PTP protocol for conformance to standards or user-defined profiles.
- Automatic pass/fail indication – check captured PTP messages against a pre-defined set of rules, with clear pass/fail alerts.

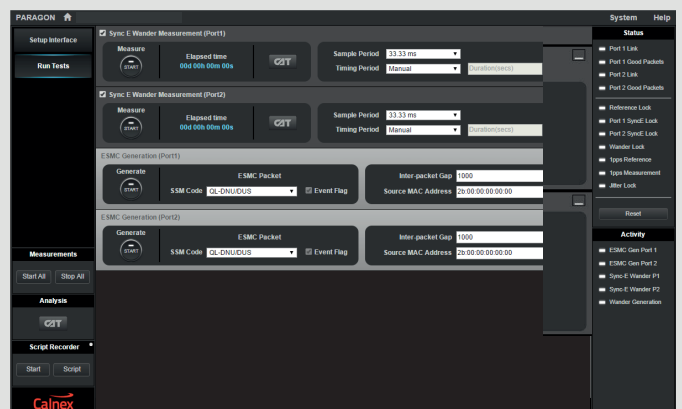
Direction	Packet #	Arrival Time	messageType	reserved	sourcePortIdentity	sequenceId	logMessageInterval (s)	PTP Body Fields
	0	0.000000000	SYNC	0x0	0x4F4FC2FFFEA	19826	-4	origTstamp=2013 312 22 26:21 43003
	1	0.006374565	DEL_REQ	0x0	0x00000000002	38231	-4	origTstamp=2013 312 06:21:27 46503
	2	0.006818865	DEL_RESP	0x0	0x4F4FC2FFFEA	38231	-4	recvTstamp=2013 312 06:21:27 46578
	3	0.033091960	SYNC	0x0	0x4F4FC2FFFEA	19827	-4	origTstamp=2013 312 22 26:21 43003
	4	0.055697000	SYNC	0x0	0x4F4FC2FFFEA	19828	-4	origTstamp=2013 312 06:21:27 46503
	5	0.068874565	DEL_REQ	0x0	0x00000000002	38232	-4	recvTstamp=2013 312 06:21:27 46578
	6	0.069308760	DEL_RESP	0x0	0x4F4FC2FFFEA	38232	-4	origTstamp=2013 312 22 26:21 43003
	7	0.069025580	SYNC	0x0	0x4F4FC2FFFEA	19829	-4	origTstamp=2013 312 06:21:27 46503
	8	0.120254646	SYNC	0x0	0x4F4FC2FFFEA	19830	-4	recvTstamp=2013 312 06:21:27 46578
	9	0.131354628	DEL_REQ	0x0	0x00000000002	38233	-4	origTstamp=2013 312 22 26:21 43003
	10	0.131843375	DEL_RESP	0x0	0x4F4FC2FFFEA	19831	-4	origTstamp=2013 312 06:21:27 46503
	11	0.150113200	SYNC	0x0	0x4F4FC2FFFEA	19832	-4	recvTstamp=2013 312 06:21:27 46578
	12	0.160245560	SYNC	0x0	0x4F4FC2FFFEA	38234	-4	origTstamp=2013 312 22 26:21 43003
	13	0.163874565	DEL_REQ	0x0	0x00000000002	38235	-4	origTstamp=2013 312 06:21:27 46503
	14	0.164430550	DEL_RESP	0x0	0x4F4FC2FFFEA	19833	-4	recvTstamp=2013 312 06:21:27 46578
	15	0.210401260	SYNC	0x0	0x4F4FC2FFFEA	19834	-4	origTstamp=2013 312 22 26:21 43003
	16	0.240021620	SYNC	0x0	0x4F4FC2FFFEA	19835	-4	origTstamp=2013 312 06:21:27 46503
	17	0.256374565	DEL_REQ	0x0	0x00000000002	38236	-4	recvTstamp=2013 312 06:21:27 46578
	18	0.256918865	DEL_RESP	0x0	0x4F4FC2FFFEA	19836	-4	origTstamp=2013 312 22 26:21 43003
	19	0.270008050	SYNC	0x0	0x4F4FC2FFFEA	19837	-4	origTstamp=2013 312 06:21:27 46503
	20	0.300627250	SYNC	0x0	0x4F4FC2FFFEA	38237	-4	recvTstamp=2013 312 06:21:27 46578
	21	0.319874565	DEL_REQ	0x0	0x00000000002	19838	-4	origTstamp=2013 312 22 26:21 43003

Average Message Rate (msg/sec): SYNC 33.373, FOLLOW-UP 0.000, ANNOUNCE 0.663, DEL-RESP 11.933, DEL-REQ 16.200, SIGNALING 1.350

Total Counts: Packets 302, Erroneous Packets 10, FAIL Total Pass Rate: 96.6%

## Conformance Test Application

- Start testing in seconds – just two clicks to configure crucial standards-defined test sequences.
- Automatically generates PTP and ESMC messages, Time Error and SyncE impairments, and applies filters, metrics and masks.

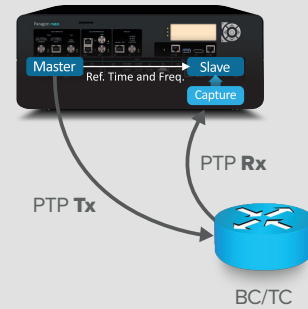




- Analyze the Time Error (TE) of, for example, T-Boundary Clocks or PRTC/Master Clocks.
- Apply standards-defined Time Error impairments.
- Combine with SyncE and ESMC for complex tests such as Phase Noise Response to SyncE Transient.

## PTP Applications

Test hybrid devices simultaneously with PTP Time Error/ SyncE wander and measure output packet timing, recovered clocks and SyncE wander with unbeatable test accuracy and repeatability.



### Application

- Boundary Clock Testing
- Transparent Clock Testing
- PTS and APTS Clock Testing
- Master Clock Testing
- O-DU and O-RU Testing

### Standard

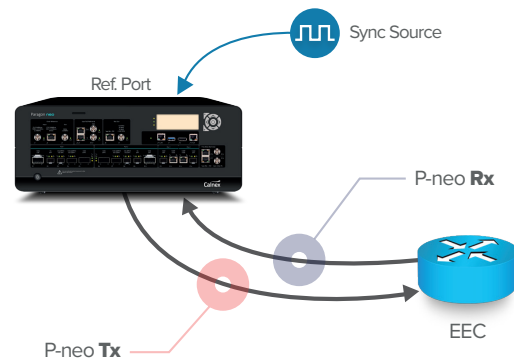
- ITU-T G.8273.2
- ITU-T G.8273.3
- ITU-T G.8273.4
- ITU-T G.8272/8272.1
- O-RAN.WG4.CONF.0



The Calnex Analysis Tool (CAT) provides powerful insight into network and device performance. All your measurement results are now in one place, and you can view multiple graphs simultaneously for easier correlation of your results. Plus, with enhanced graphics, it's easy to evaluate metrics such as MTIE and TDEV against ITU-T and O-RAN masks.

## SyncE Applications – ITU-T G.8262.1/G.8262 (Jitter and Wander)

The Paragon-Neo supports full SyncE testing to ITU-T G.8262.1/G.8262 including Wander Tolerance, Wander Transfer, Wander (Noise) generation, Pull-in, Hold-in and Pull-out ranges, Frequency Accuracy and Phase Transient, plus Jitter Tolerance and Jitter Generation.



### Application

- |                                  |                               |                    |
|----------------------------------|-------------------------------|--------------------|
| SyncE Jitter Generation          | Jitter free                   | Measure Jitter     |
| SyncE Jitter Tolerance           | Apply Jitter                  | Check Test Packets |
| SyncE Wander (noise) Generation  | Wander free                   | Measure Wander     |
| SyncE Wander (noise) Tolerance   | Apply Wander                  | Check ESMC         |
| SyncE Wander (noise) Transfer    | Apply Wander                  | Measure Wander     |
| SyncE Short Term Phase Transient | Break line or set ESMC QL=DNU | SyncE TIE, MTIE    |

### P-Neo Tx

### P-Neo Rx

## PTP Performance Summary

- Capture and decode PTP packets for analysis and Time Error testing
- PTP clock emulation, plus the Paragon-Neo's unique conformance test application, removes uncertainty and maximizes test repeatability – essential for validating new, high-accuracy 5G network devices
- Automatic test of PTP profile compliance for simple and reliable verification against standards-based or user-defined profile configurations

## SyncE Performance Summary

- Prove SyncE wander performance to ITU-T G.8262.1/G.8262
- Evaluate MTIE/TDEV pass/fail results to ITU-T G.8262.1/G.8262 masks
- Check ESMC (SSM) messaging to ITU-T G.8264
- Test SyncE jitter performance to ITU-T G.8262.1/G.8262

## Specifications

Product	
Optical Interfaces (all optional)	100GbE: SFP 1GbE: SFP 10GbE: SFP+ 25GbE: SFP28 40GbE: QSFP+ 50GbE: QSFP28 100GbE: QSFP28  50GbE (PAM4): SFP56 (Paragon-neo A only) 100GbE (PAM4): QSFP28 (Paragon-neo A only) 200GbE (PAM4): QSFP56 (Paragon-neo A only) 400GbE (PAM4): QSFP-DD (Paragon-neo A only)
Electrical Interfaces	1000/100 BASE-T: RJ45
External Reference Clocks	Lock internal timing reference to external reference. External reference inputs: 2.048 MHz, 10 MHz, T1 BITS clock (1.544 Mb/s), E1 MTS (2.048 Mb/s).
Internal Reference Clock	Frequency stability over temperature – better than $\pm 1 \times 10^{-9}$ . Short term phase stability – better than 500 ps.
Clock Reference Output Ports	2 x 10 MHz/2.048 MHz Reference Outputs (BNC).
Phase Measurement	1PPS – BNC (unbalanced). 1PPS – RJ (balanced).
Frequency measurement	BNC (unbalanced) RJ48 (balanced)
1 PPS + ToD Reference Input	1PPS Unbalanced Input (BNC), 1 pps Balanced Input + ToD (RJ48C). ToD format: CCSA, ITU-T, NMEA.
1 PPS + ToD Reference Output	1PPS Unbalanced Output (BNC), 1 pps Balanced Output + ToD (RJ48C). ToD format: CCSA, ITU-T, NMEA.
Mechanical Data	
Dimensions (w x h x d)	45 x 17 x 40 cm
Weight	13kg
PTP	
Standards	IEEE 1588 G.8273.2 G.8272 All relevant ITU-T G.826x/827x standards.
Supported Profiles	IEEE 1588V2 and ITU-T G.8275.1, G.8275.2, G.8265.1
PTP Time Error Measurement Accuracy	Better than 1 ns for NRZ Optical interfaces.* Better than 5 ns for PAM4 optical interfaces and electrical interfaces.†
timeTransmitter/timeReceiver Emulation	Emulate PTP timeTransmitter with full parametric control. Emulate PTP timeReceiver. Add Time Error patterns e.g. G.8273.2, G.8271.1, G.8271.2, G.8261, user-defined.
Time Error Metrics	Built-in (CAT) software including industry-standard ITU-T pass/fail masks with clear pass/fail indication. Time Error (2Way and 1Way) – packet selection and filtering as per ITU-T specifications cTE, dTE, etc.
PTP Packet Analysis	Decode and display PTP Fields with PFV. (Additional options with full PFV licence: Display pass/fail to standards-based or user-defined rules; report generation capability.)
SyncE	
Jitter/Wander Measurement	ITU-T G.8262.1, G.8262 and O.174. Jitter/Wander Generation, Wander Transfer, Jitter/Wander Tolerance, Phase Transient, built-in frequency offset plus generation of sinusoidal, MTIE and TDEV Wander.
Wander Analysis	Built-in (CAT) software including industry-standard ITU-T pass/fail Masks with clear pass/fail indication. ITU-T Masks: G.8261, G.8262, G.8262.1, G.8261.1 Wander Measurements: TIE, MTIE, TDEV, clock FFO.
ESMC (SSM) Features	Decode ESMC messages to ITU-T G.8264 and graph/plot Quality Level (QL) changes graphically (bi-directional). Generate ESMC (SSM) packets as per ITU-T G.8264. Enhanced SSM fully supported.
Phase Wander Measurement Resolution	250ps
General	
PC/Mac or Tablet Control Interface	Web-based GUI with built-in controller enables use of any PC or Android Tablet with any browser with screen resolution of 1024 x 768 pixels. RJ 45 LAN connection to instrument.
Workflow	Graphical test-case driven workflow with real-time status and results. Stimulus/Response test configuration tool. Detailed configuration options also available.
Remote Control	Scripting via TCL, Perl and Python. Automatic Script Recorder for TCL, Perl and Python. Compatible with Calnex Test Sequencer (CTS) for creation/use of specific or user-defined test plans.

\* Except 100MbE (5 ns)



Calnex Solutions plc  
Oracle Campus  
Linlithgow, West Lothian  
EH49 7LR  
United Kingdom

tel: +44 (0) 1506 671 416  
email: [info@calnexsol.com](mailto:info@calnexsol.com)

[calnexsol.com](http://calnexsol.com)

© Calnex Solutions plc, 2026.  
CX2016 v11.0